

EU TYPE EXAMINATION CERTIFICATE

Nr: LDsq08-0724-0035-20

MKL ASANSÖR OTOMOTİV İNŞAAT NAKLİYE SAN. VE TİC. LTD. ŞTİ.

FEVZİÇAKMAK MAH. 10728. SOK. NO:4/1 – KARATAY, KONYA, TURKEY

D KARE GÖZETİM TEST VE BELGELENDİRME TİC. LTD. ŞTİ.; evaluated and approved that the safety component for lifts manufactured by the company stated above meets the essential health and safety requirements of the Lifts Directive 2014/33/EU Annex I.

2014/33/EU Annex IV/A EU-type examination of safety components for lifts (Module B)

PRODUCT;

Description	: Overspeed Limitation Devices according to Annex III article 3 of 2014/33/EU
Name	: Overspeed Governor
Trade Mark	: KALKAN
Type	: MKL-CH, MKL-A3, MKL-MD
Type Variants	: MKL-CH-1, MKL-CH-2, MKL-CH-3, MKL-CH-4, MKL-CH-5, MKL-CH-6, MKL-CH-7 MKL-A3-1, MKL-A3-2, MKL-A3-3, MKL-A3-4, MKL-A3-5, MKL-A3-6, MKL-A3-7 MKL-MD-1, MKL-MD-2, MKL-MD-3, MKL-MD-4, MKL-MD-5, MKL-MD-6, MKL-MD-7
Basic Characteristics	: Rated speed: in the range of 0,63 to 2,50 m/s Maximum tripping speed: in the range of 0,95 and 3,22 m/s

Re-evaluation should be performed by D KARE if any change occur on the design of the types stated in annex of this certificate or any change occur on the relevant harmonised standard.

This certificate is issued according to the findings stated in final report Nr. LDsq08-0724-0035-20 23/07/2020.

Inspection and test methods stated in harmonised standards TS EN 81-20:2020 ve TS EN 81-50:2020 has been applied while conformity assesment process.

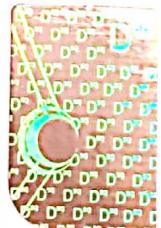
Selcan GÖRMÜŞ

Director

Issue Date : July 24, 2020

Valid To : July 23, 2025

Date/Number of revision : May 15, 2021/1



LIFTS-2528-2100123

